

# CERTIFICATE OF LOCATION OF GOVERNMENT CORNER

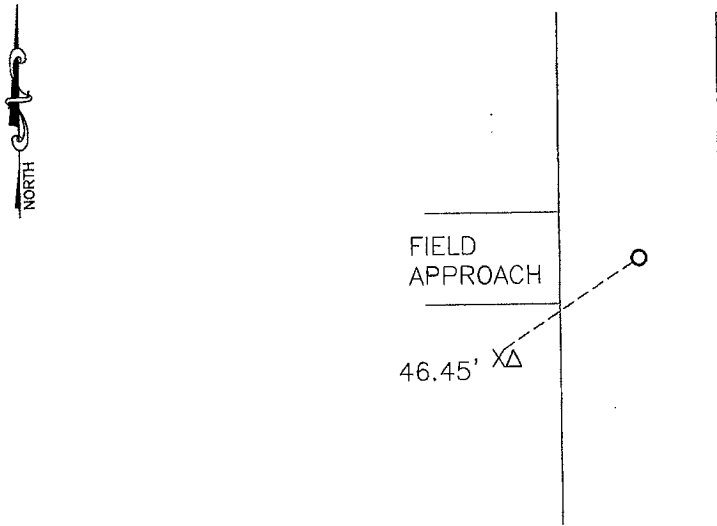
EAST QUARTER Corner of Section 25, Township 105, Range 42, 5TH P.M.

STATE OF MINNESOTA, County of MURRAY

At the corner location shown on the sketch:

- On 04-16-2012 found a concrete block.  
DATE
- left monument as found,  lowered monument,  removed monument (explain)
- On 04-16-2012 placed a 5/8" iron with seal on the north side of the stone.  
DATE

### SKETCH OF REFERENCE TIES



Minnesota State Plane Coordinate  
 System Murray County Datum  
 NAD83 (1996)  
 N: 108030.355  
 E: 484954.783

Nail and seal in pedestal guard post SW 46.45'

Statement of evidence relative to this corner location is on back of page.

I hereby certify that this document and the data contained herein was prepared by me or under my direct supervision

*[Signature]* 2/21/13  
SIGNATURE DATE

Registration No. 43844

- Land Surveyor,  Professional Engineer
- County Surveyor,  County Engineer

### OFFICE OF THE COUNTY RECORDER

County of

I hereby certify that this document was filed in the Co. Recorders office at \_\_\_\_\_ .M on the \_\_\_\_\_ day of MAY 23 2013 A.D. 20 \_\_\_\_\_

County Recorder *Jamie V. Johnson*  
 By \_\_\_\_\_, Deputy

DOCUMENT NO. \_\_\_\_\_

## Statement of Evidence

In 1861, J. W. Myers did the original survey of the east line of the township.

On May 1, 1988, the Murray County Highway Department found a concrete monument at the corner.

On April 16, 2012, Bueltel-Moseng Land Surveying dug by hand and found a concrete stone at the corner. We set a  $\frac{3}{8}$ " iron with seal #43844 on the north side of the stone.